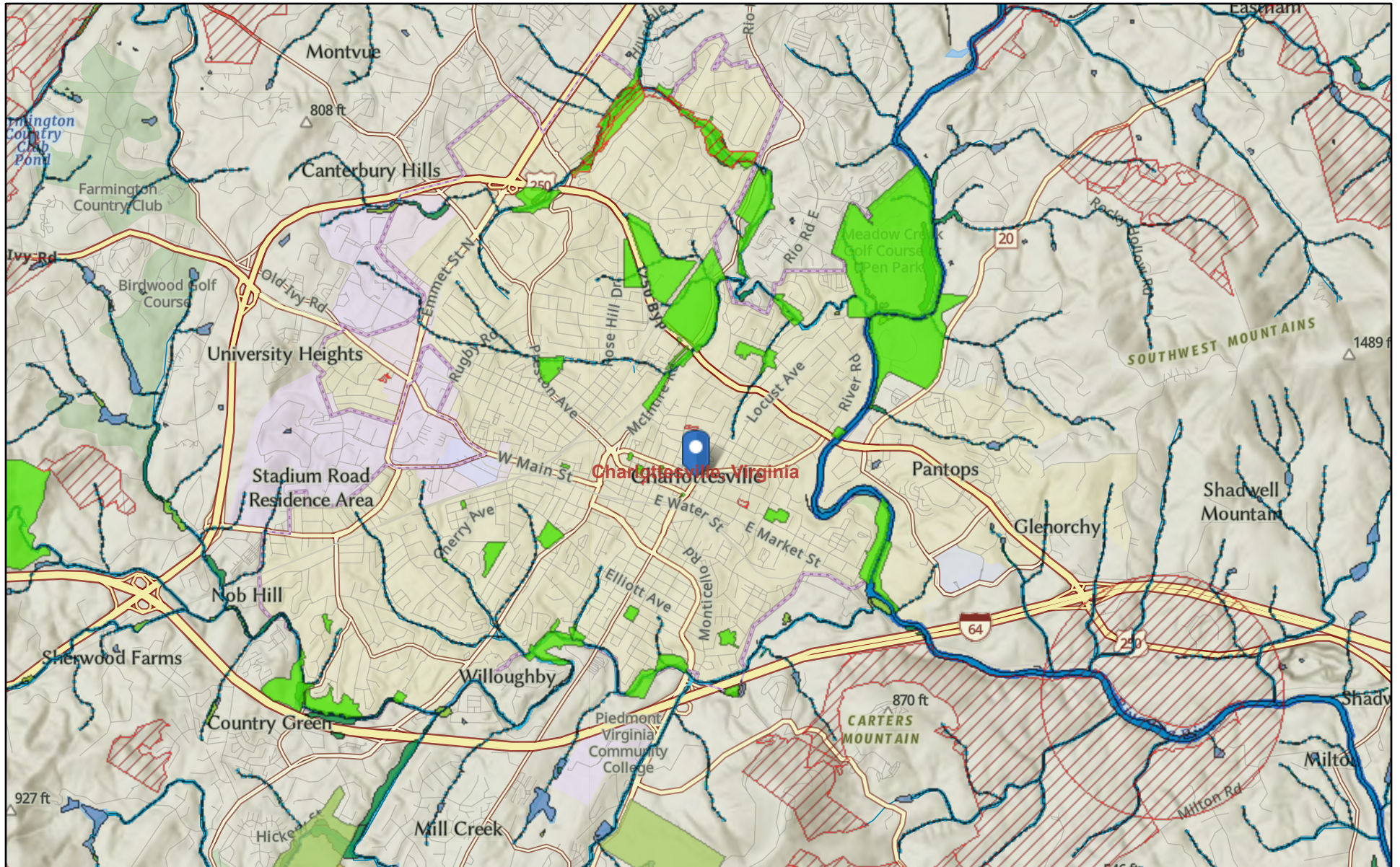
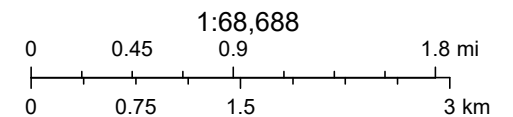
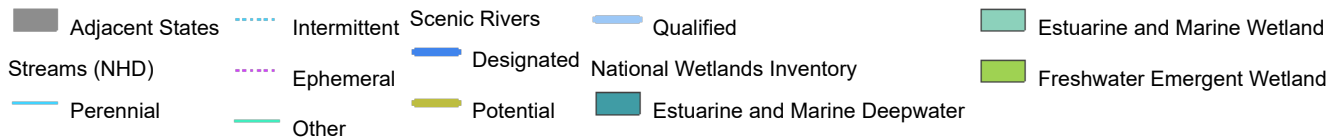


Charlottesville: Managed Conservation Lands

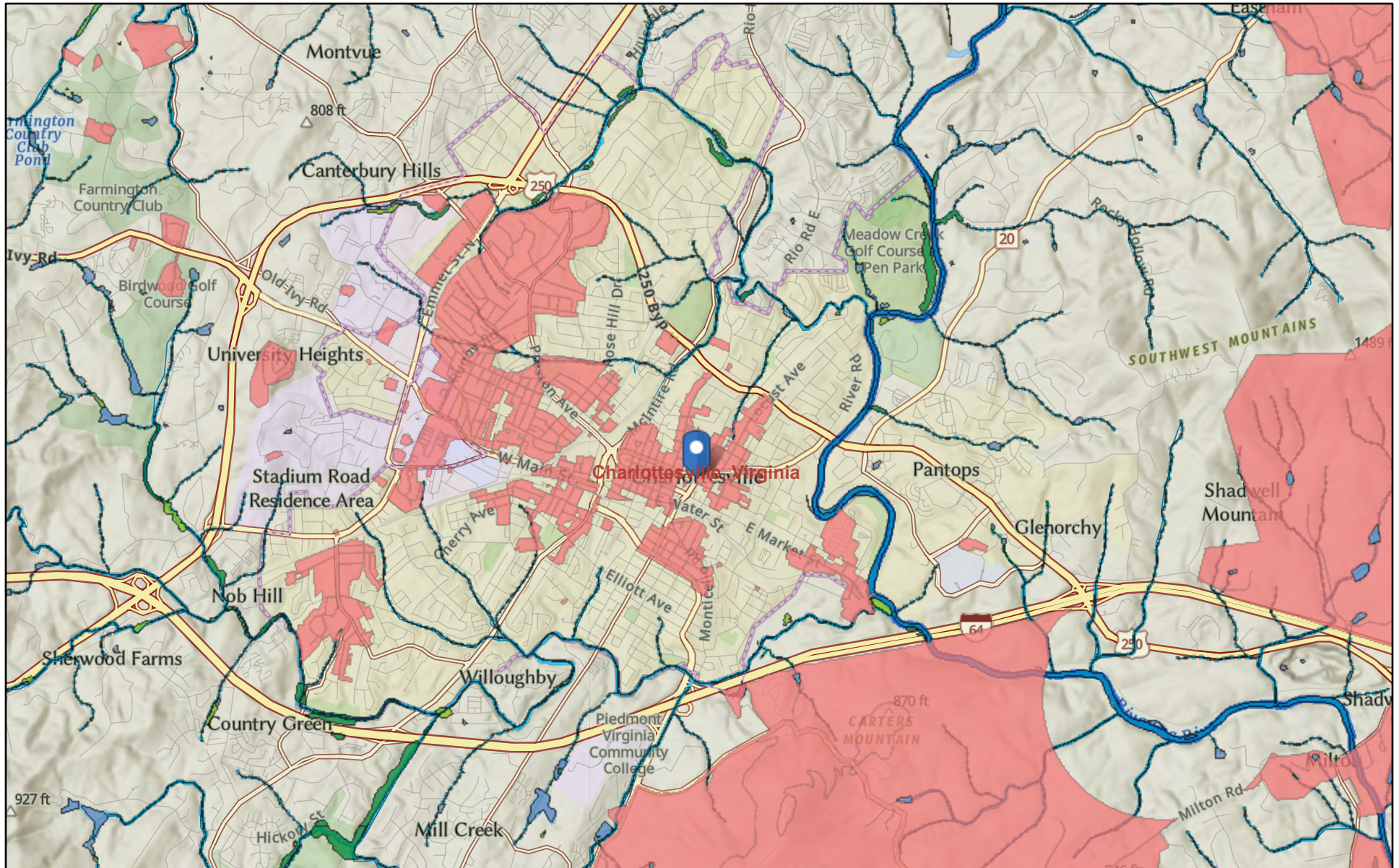


January 16, 2025

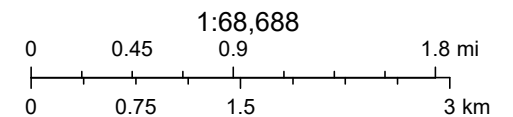
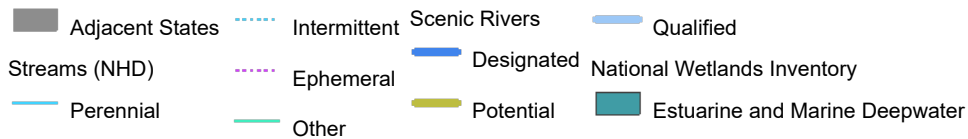


USFWS National Wetlands Inventory, WVU Facilities, VGIN, Esri, TomTom, Garmin, SafeGraph, GeoTechnologies, Inc, METI/NASA, USGS, EPA, NPS,

Charlottesville: Cultural and Historic Preservation Lands

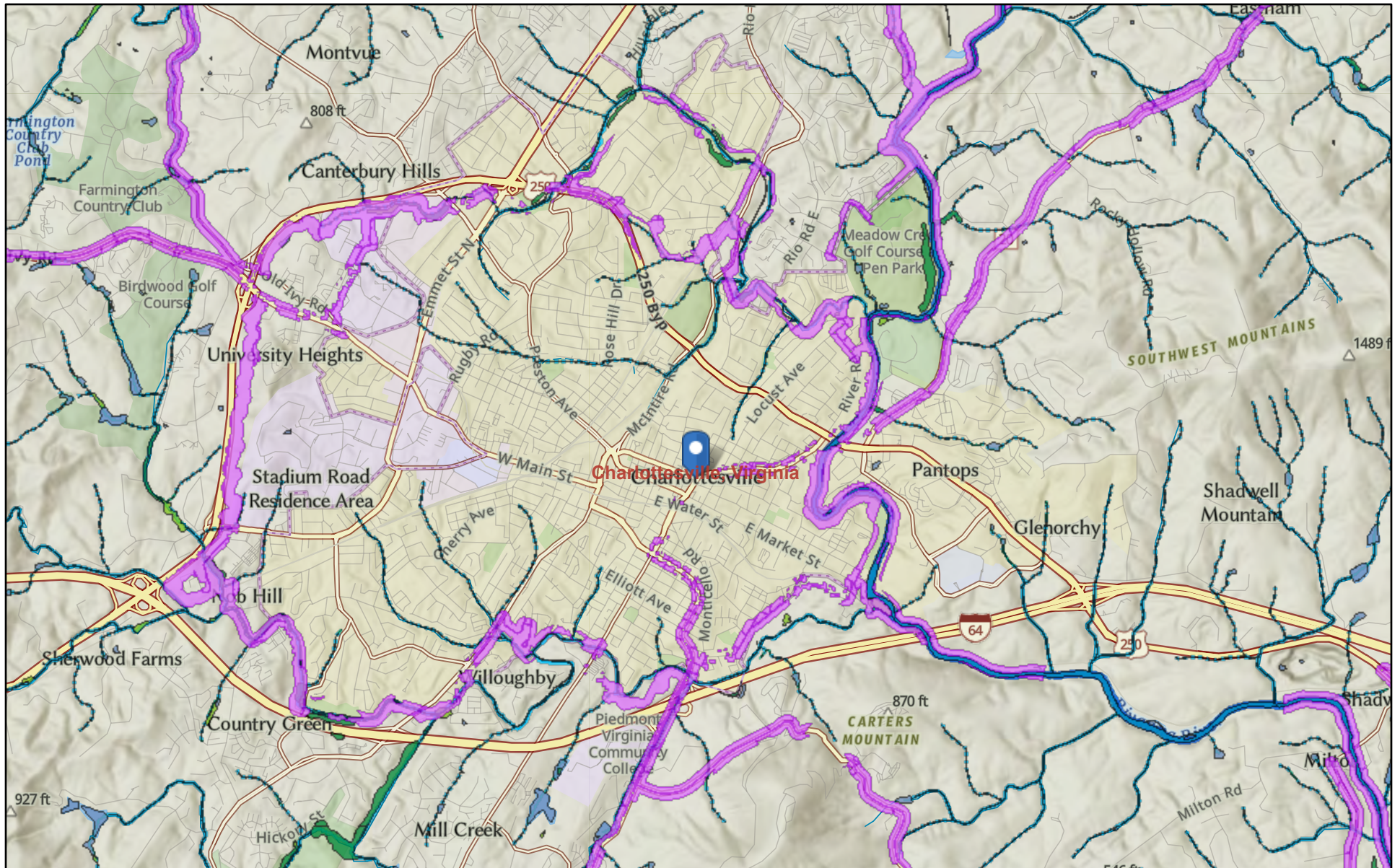


January 16, 2025

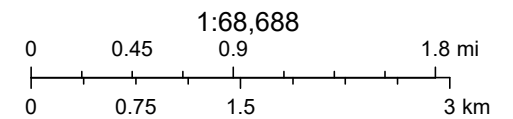
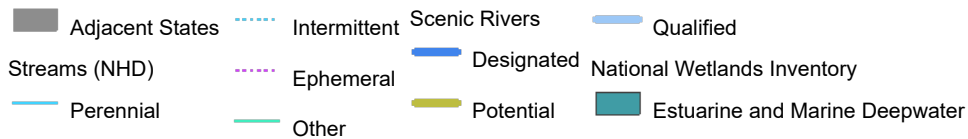


USFWS National Wetlands Inventory, WVU Facilities, VGIN, Esri, TomTom, Garmin, SafeGraph, GeoTechnologies, Inc, METI/NASA, USGS, EPA, NPS,

Charlottesville: Scenic Preservation Areas

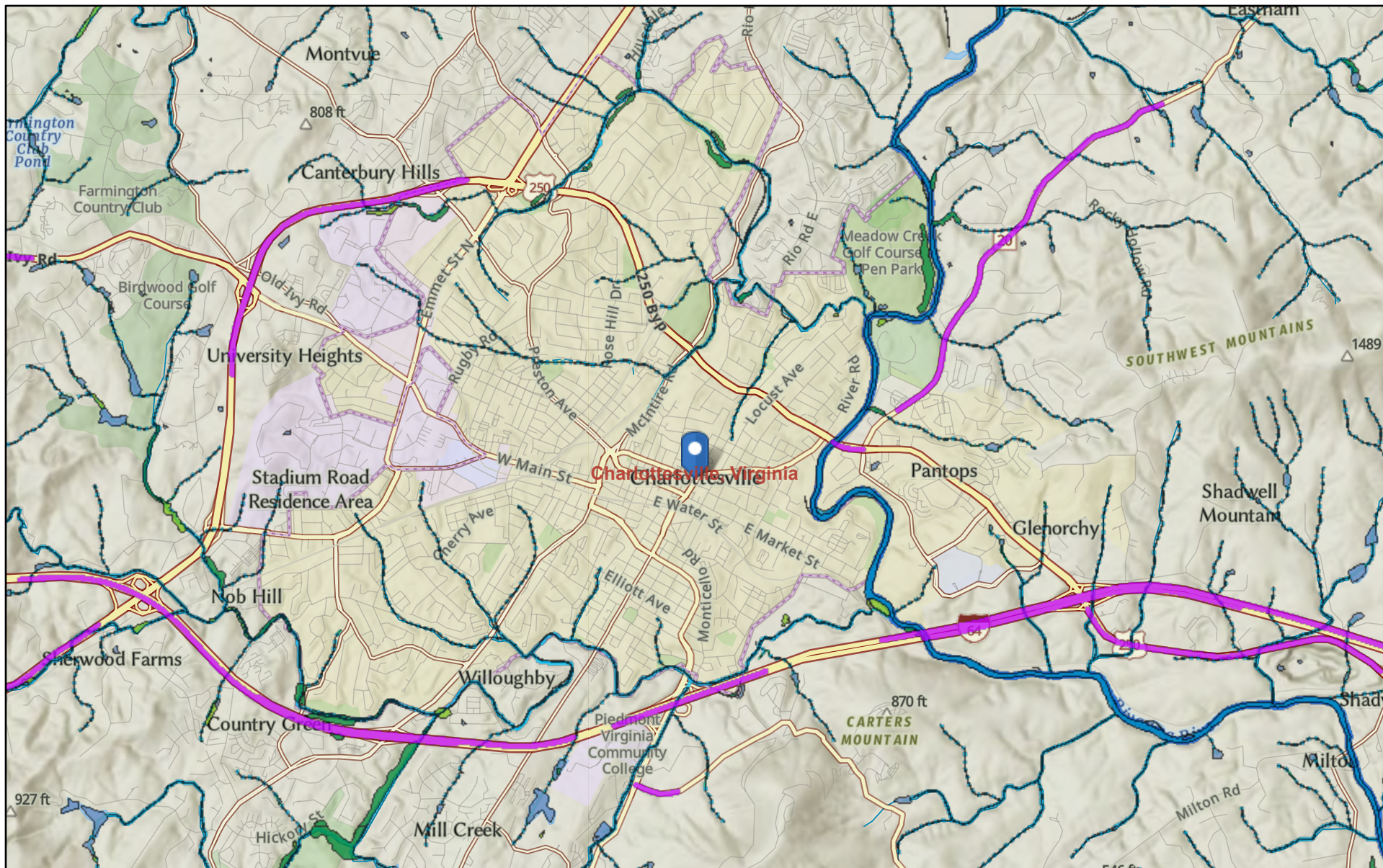


January 16, 2025

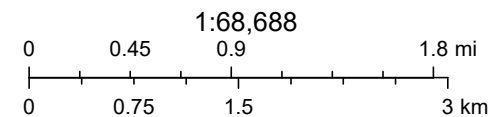
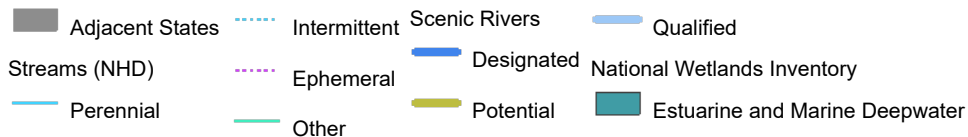


USFWS National Wetlands Inventory, WVU Facilities, VGIN, Esri, TomTom, Garmin, SafeGraph, GeoTechnologies, Inc, METI/NASA, USGS, EPA, NPS,

Charlottesville: Areas of High Wildlife-Vehicle Conflicts

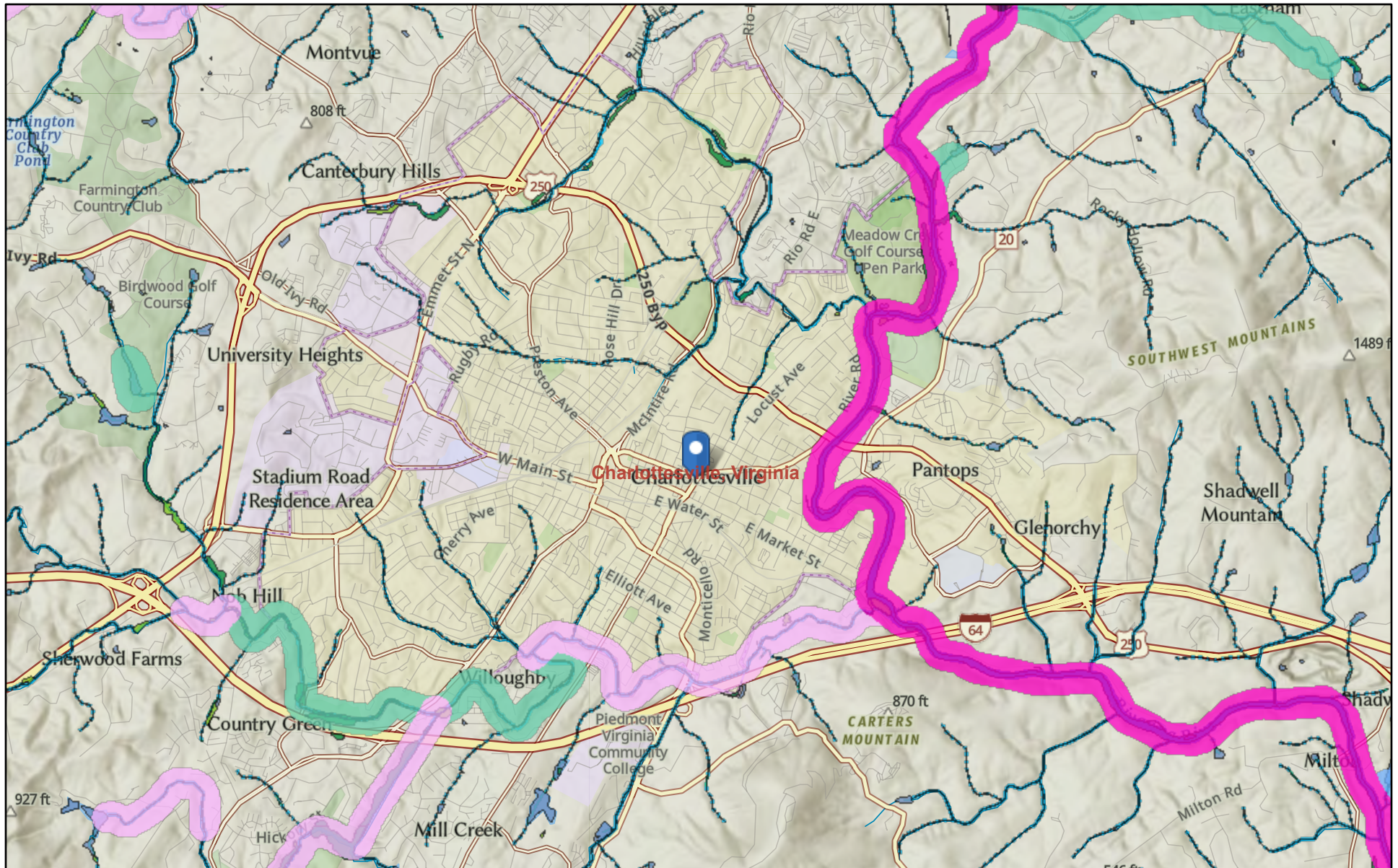


January 16, 2025

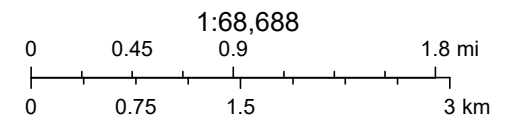
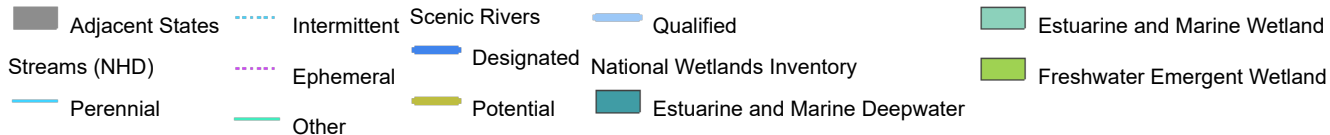


USFWS National Wetlands Inventory, WVU Facilities, VGIN, Esri, TomTom, Garmin, SafeGraph, GeoTechnologies, Inc, METI/NASA, USGS, EPA, NPS,

Charlottesville: Medium Potential for Freshwater Mussels

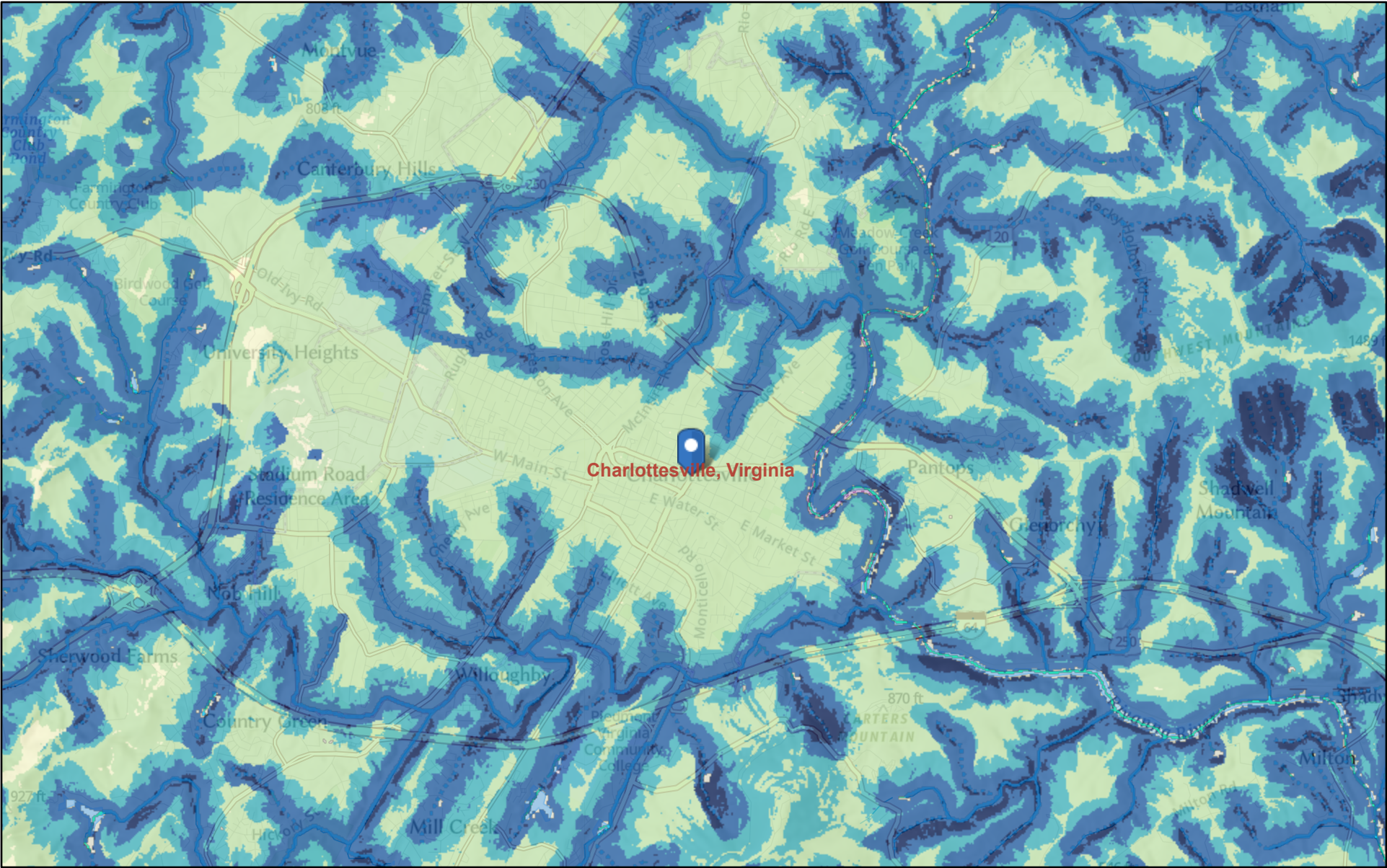


January 16, 2025



USFWS National Wetlands Inventory, WVU Facilities, VGIN, Esri, TomTom, Garmin, SafeGraph, GeoTechnologies, Inc, METI/NASA, USGS, EPA, NPS,

Charlottesville: High Watershed Impact



January 16, 2025

Adjacent States

Streams (NHD)

Perennial

Intermittent

Ephemeral

Other

Watershed Impact Model

1 - 20 (Lowest Impact)

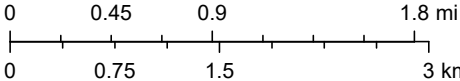
21 - 40

41 - 60

61 - 80

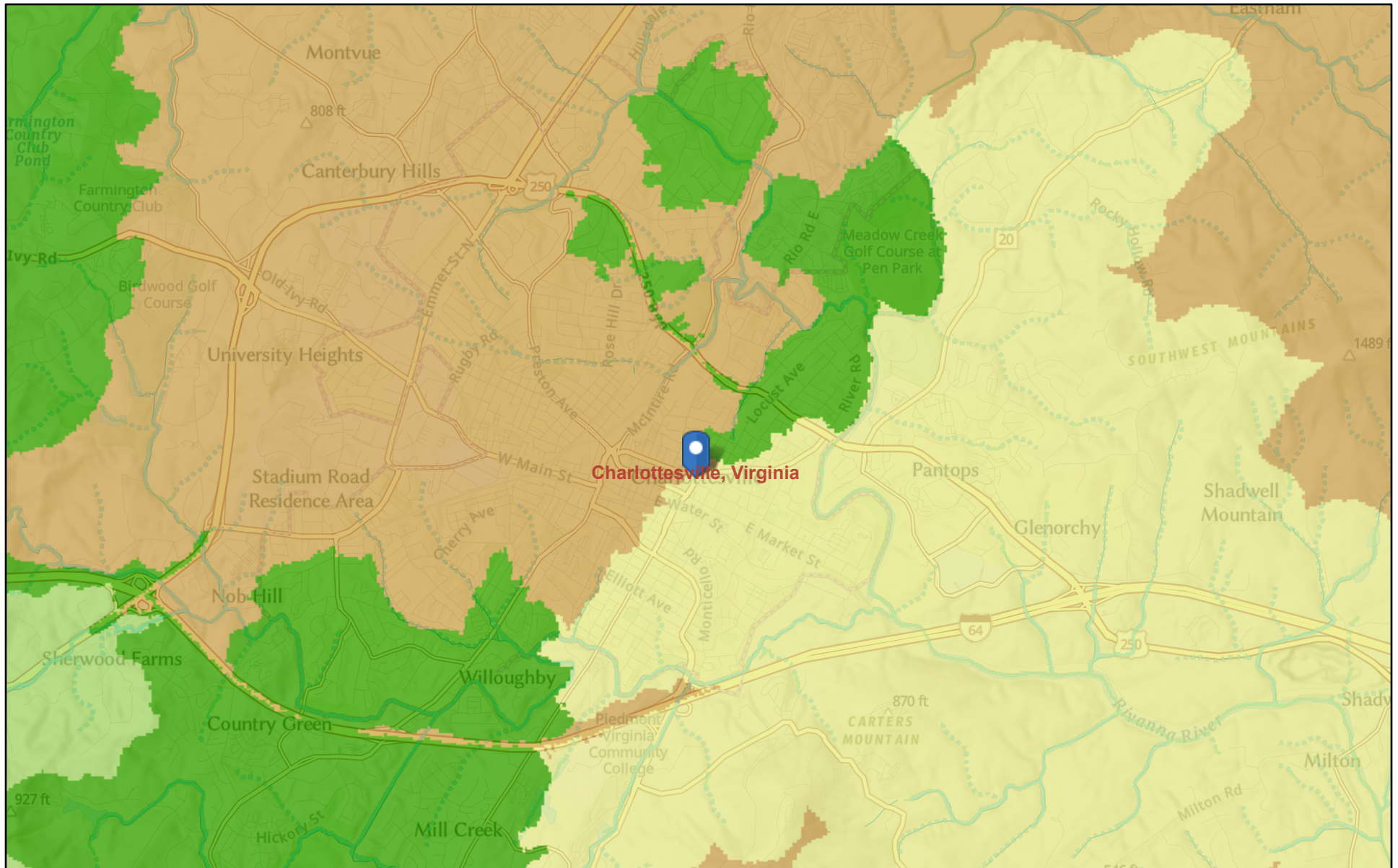
81 - 100 (Highest Impact)

1:68,688

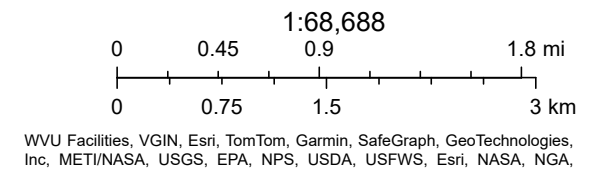
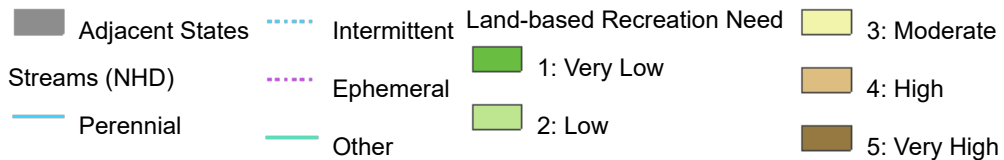


VA DCR, Division of Natural Heritage, WVU Facilities, VGIN, Esri, TomTom, Garmin, SafeGraph, GeoTechnologies, Inc, METI/NASA, USGS, EPA, NPS,

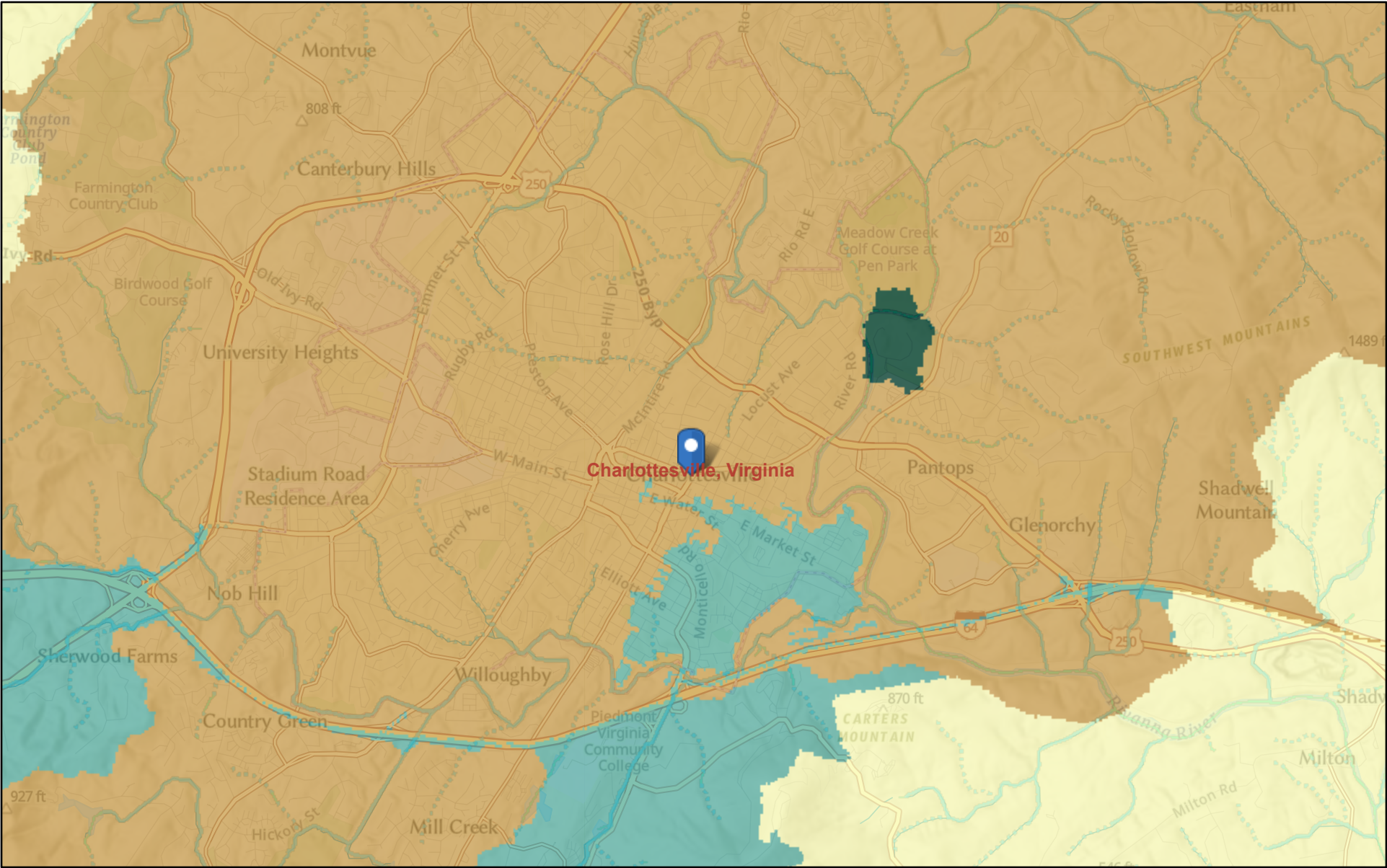
Charlottesville: High Land-based Recreation Need



January 16, 2025



Charlottesville: High Water-based Recreation Need



January 16, 2025

- Adjacent States

Streams (NHD)
— Perennial
- ⋯ Intermittent

⋯ Ephemeral

— Other
- Water-based Recreation Need

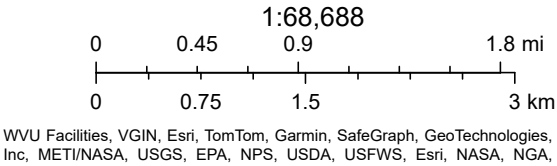
■ 1: Very Low

■ 2: Low

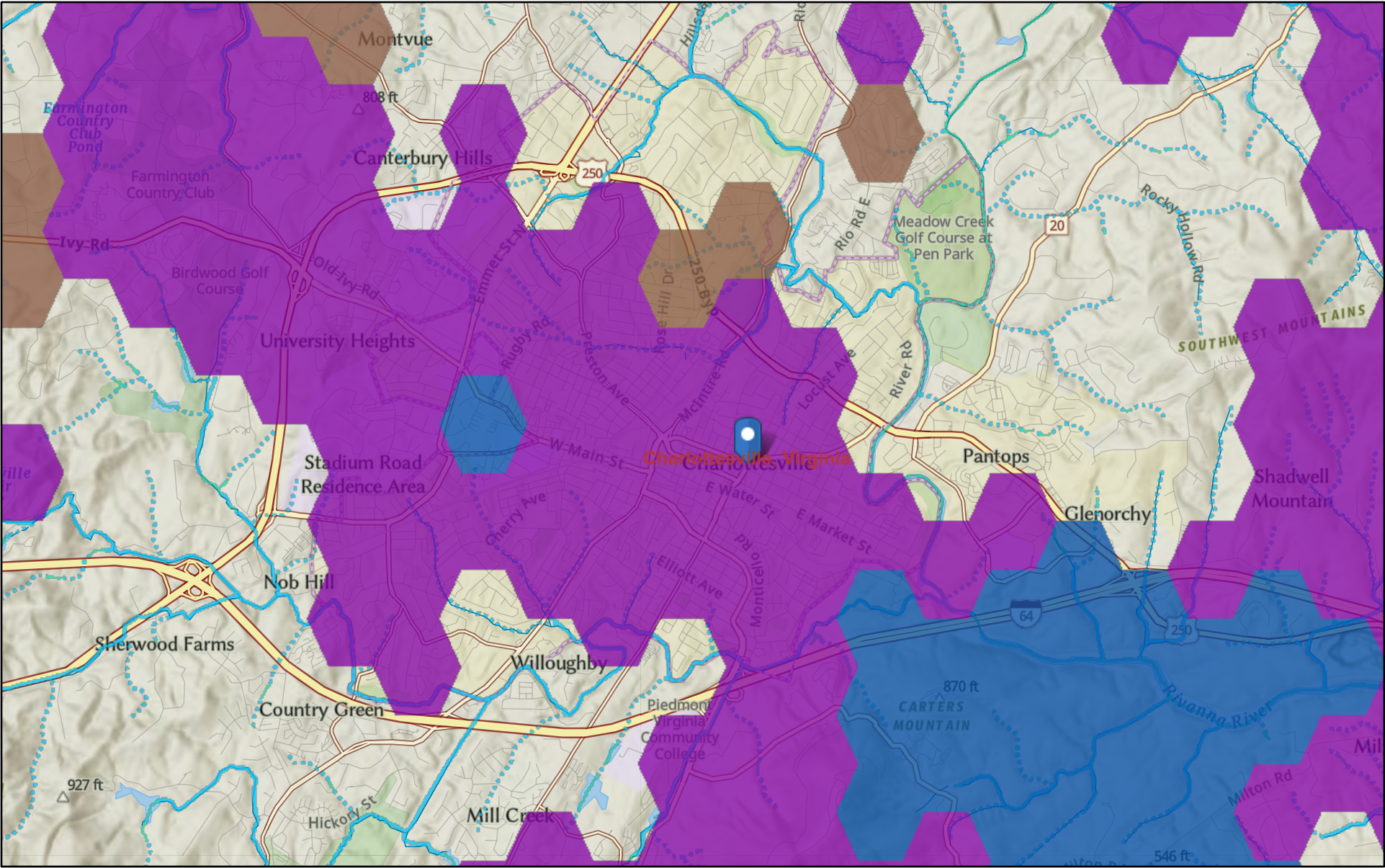
■ 3: Moderate

■ 4: High

■ 5: Very High



Charlottesville: Cultural Resource Preservation Need



January 16, 2025

- Adjacent States

— Intermittent

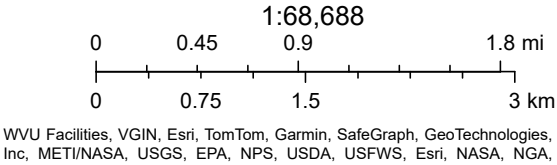
— Streams (NHD)

— Perennial
- Ephemeral

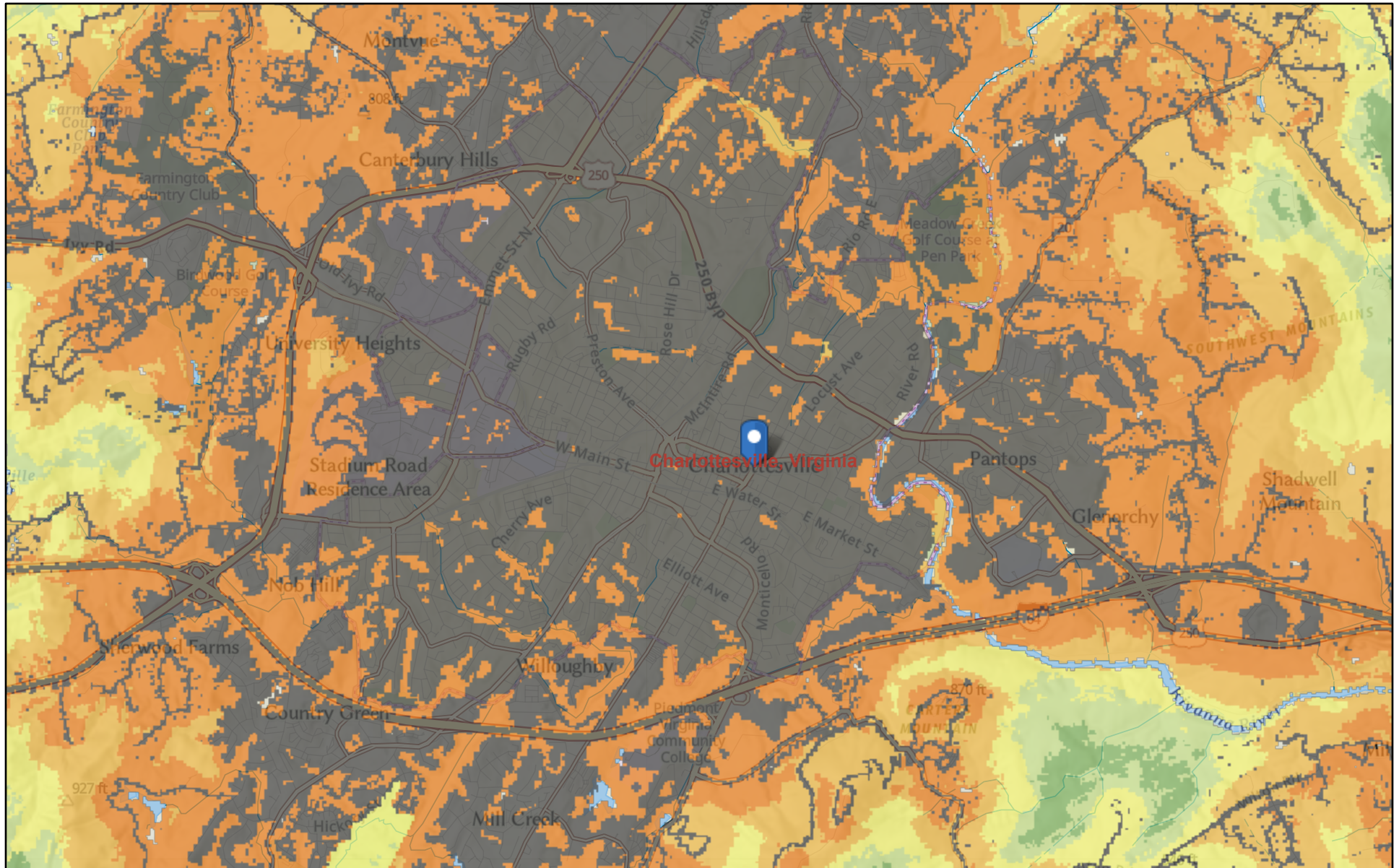
— Other
- Cultural Resource Preservation Index

■ 3

■ 2



Charlottesville: Development Vulnerability



January 16, 2025

Development Vulnerability Model

Undevelopable (-1)

Class I (0 - 5: Least Vulnerable)

Class II (6 - 10)

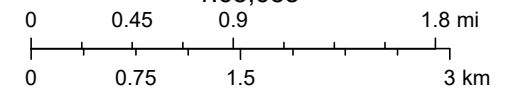
Class III (11 - 25)

Class IV (26 - 50)

Class V (51 - 100: Most Vulnerable)

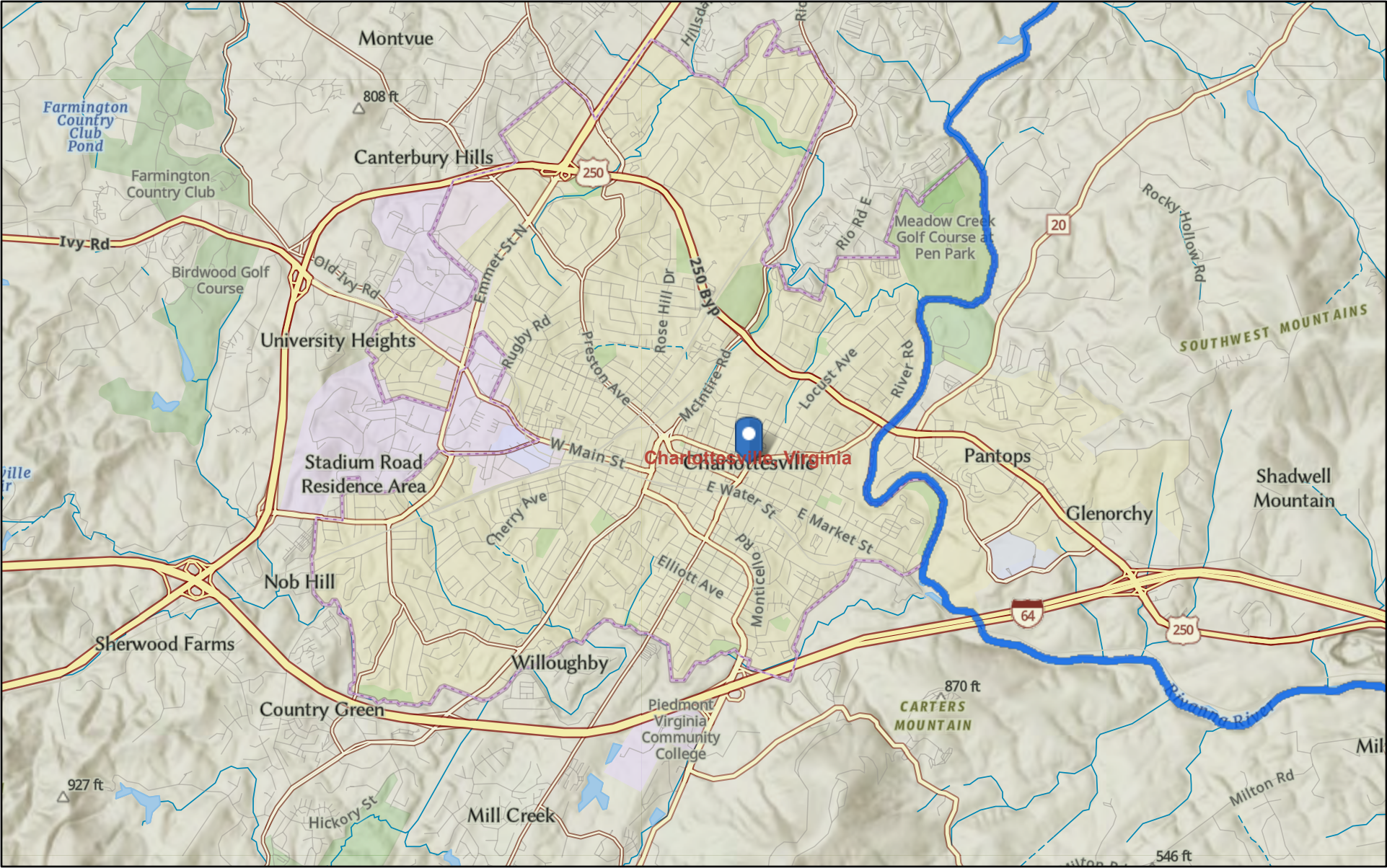
Already Developed (101)

1:68,688



WVU Facilities, VGIN, Esri, TomTom, Garmin, SafeGraph, GeoTechnologies, Inc, METI/NASA, USGS, EPA, NPS, USDA, USFWS, Esri, NASA, NGA,

Charlottesville: Scenic Rivers



January 16, 2025

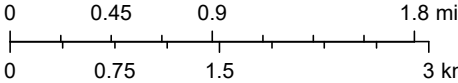
Scenic Rivers

Potential

Qualified

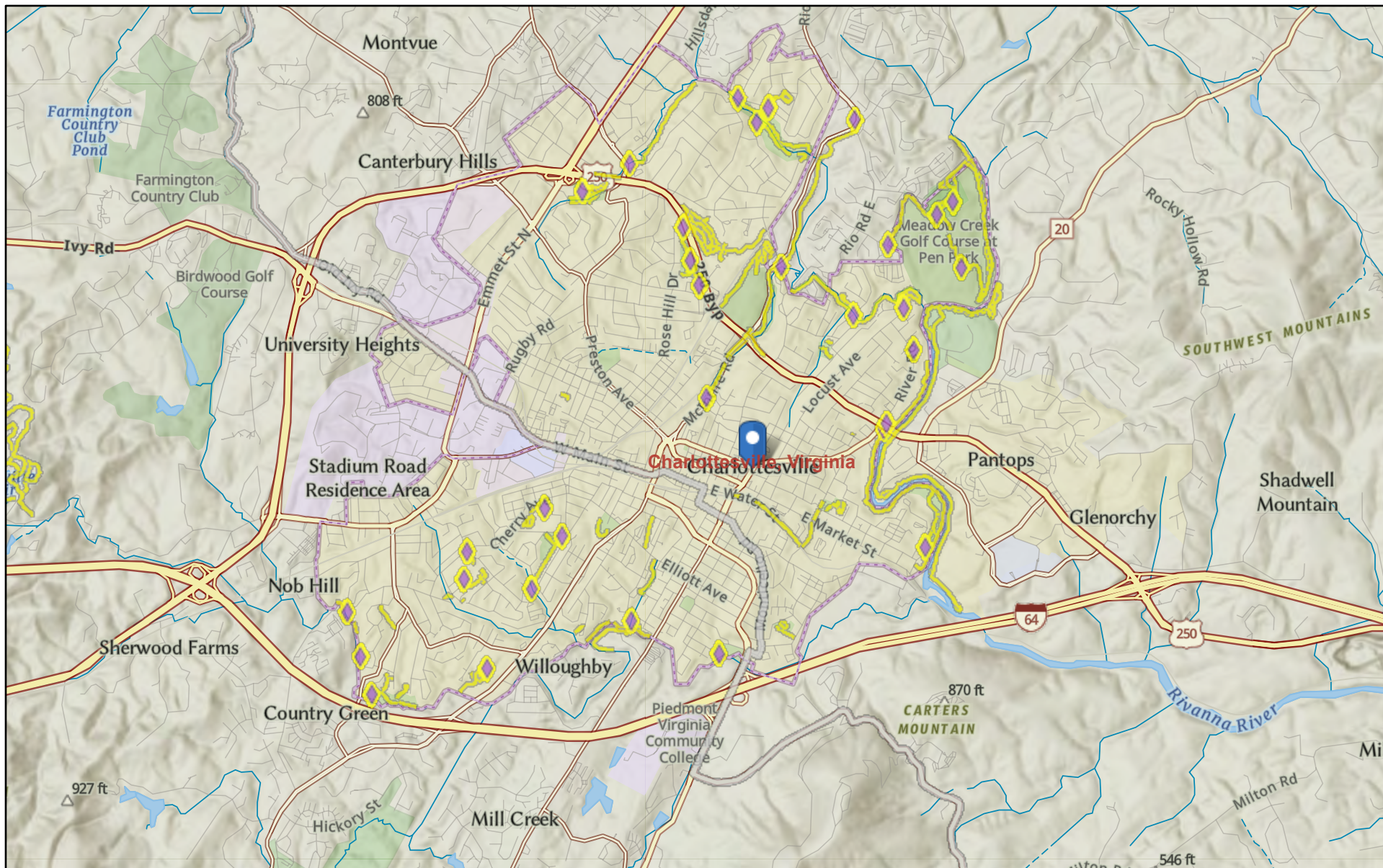
Designated

1:68,688

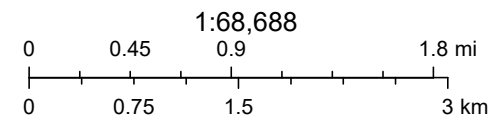
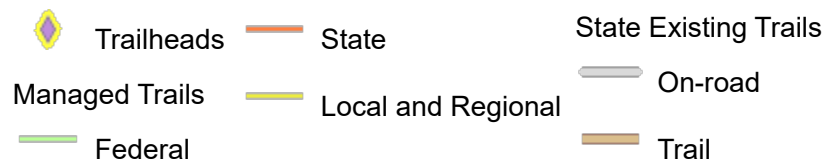


WVU Facilities, VGIN, Esri, TomTom, Garmin, SafeGraph, GeoTechnologies, Inc, METI/NASA, USGS, EPA, NPS, USDA, USFWS, Esri, NASA, NGA,

Charlottesville: Trails



January 16, 2025



WVU Facilities, VGIN, Esri, TomTom, Garmin, SafeGraph, GeoTechnologies, Inc, METI/NASA, USGS, EPA, NPS, USDA, USFWS, Esri, NASA, NGA,